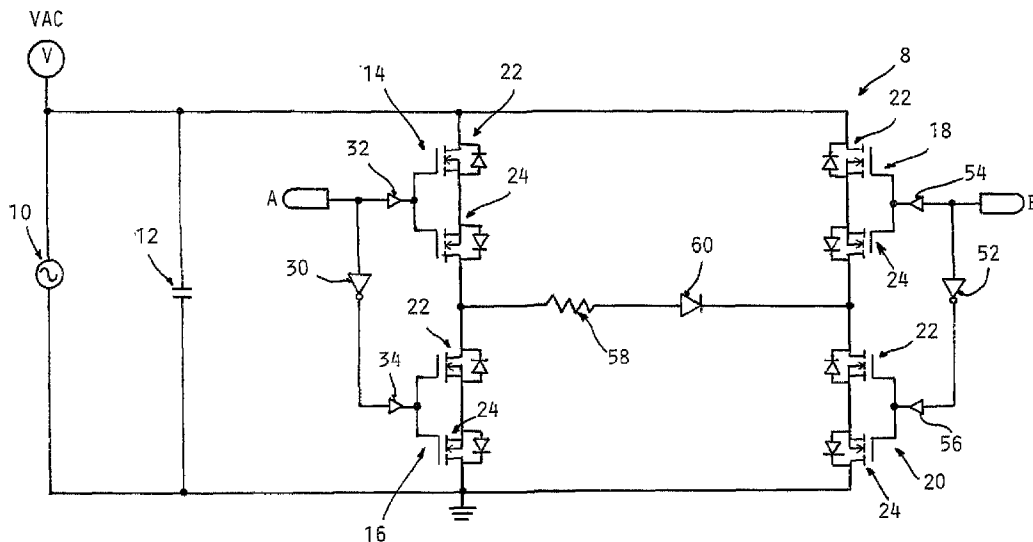




(86) **Date de dépôt PCT/PCT Filing Date:** 2010/01/20
 (87) **Date publication PCT/PCT Publication Date:** 2010/08/05
 (45) **Date de délivrance/Issue Date:** 2017/02/14
 (85) **Entrée phase nationale/National Entry:** 2011/07/14
 (86) **N° demande PCT/PCT Application No.:** US 2010/021448
 (87) **N° publication PCT/PCT Publication No.:** 2010/088105
 (30) **Priorités/Priorities:** 2009/01/21 (US61/146,041);
 2010/01/19 (US12/689,498)

(51) **Cl.Int./Int.Cl. H05B 37/02** (2006.01),
H02M 7/02 (2006.01)
 (72) **Inventeur/Inventor:**
 LANGOVSKY, NICK, US
 (73) **Propriétaire/Owner:**
 ILUMISYS, INC., US
 (74) **Agent:** SIM & MCBURNEY

(54) **Titre : CONVERTISSEUR CA/CC DIRECT POUR MINIMISATION DE COMPOSANT PASSIF ET FONCTIONNEMENT UNIVERSEL DE RESEAUX DE LED**
 (54) **Title: DIRECT AC-TO-DC CONVERTER FOR PASSIVE COMPONENT MINIMIZATION AND UNIVERSAL OPERATION OF LED ARRAYS**



(57) **Abrégé/Abstract:**

Disclosed herein is a power converter circuit for a LED lighting device. The power converter includes a pair of input terminals adapted to be connected to a signal source, at least one LED, a first circuit adapted to supply current to the at least one LED and

(57) Abrégé(suite)/Abstract(continued):

including: a first bi-directional switch connected between one input terminal and one side of the at least one LED, and a second bi-directional switch connected between the other side of the at least one LED and the other input terminal, and a second circuit adapted to supply current to the at least one LED and including: a third bi-directional switch connected between the other input terminal and the one side of the at least one LED, and a fourth bi-directional switch connected between the one input terminal and the other side of the at least one LED.